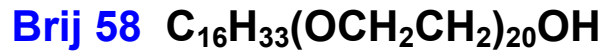


Materials

1. Emulsifiers

⇒ Nonionic surfactant – polyoxyethylene-20 cetyl ether



⇒ Anionic surfactant – sodium dodecyl sulphate



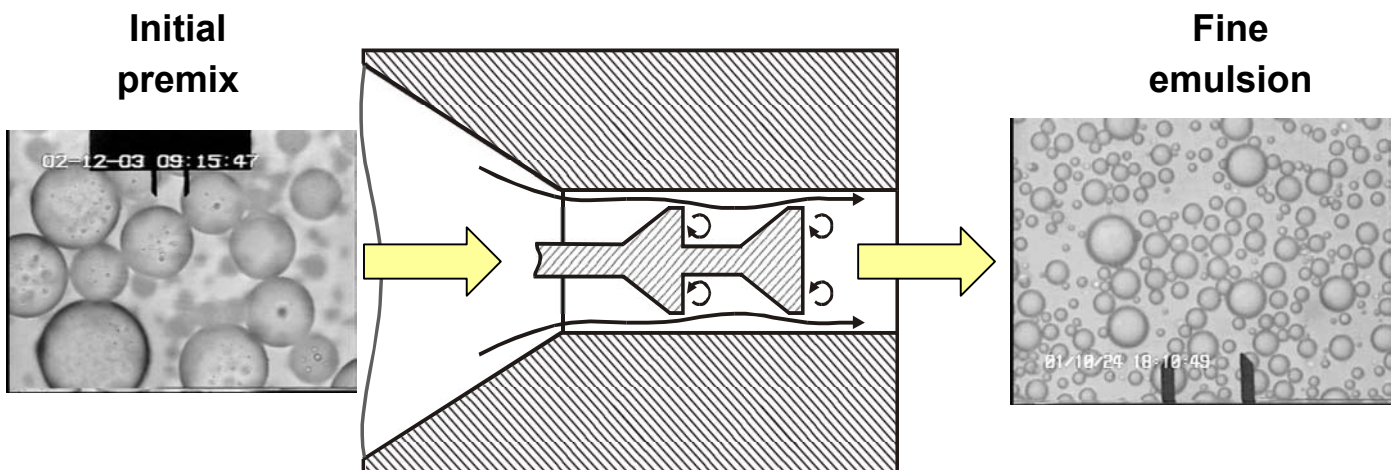
⇒ Protein emulsifier – whey protein concentrate

WPC Mixture of globular proteins

2. Oil phases – soybean oil and purified hexadecane

Experimental methods

□ Emulsion preparation: narrow-gap homogenizer



□ Drop-size distribution - optical microscopy

$$d_{32} = \frac{\sum N_i d_i^3}{\sum N_i d_i^2} \quad \text{Volume-surface diameter}$$